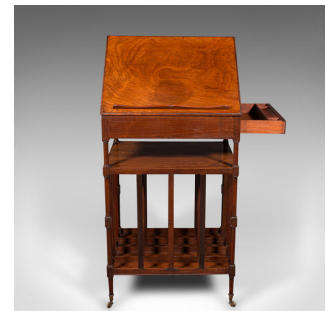
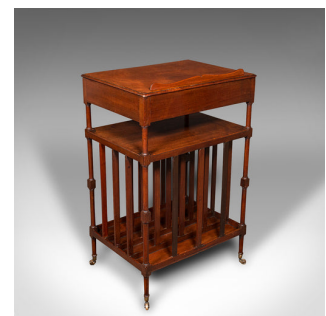


Antique Canterbury Reading Table, English, Walnut, Lectern, Orator, Regency



DESCRIPTION

Our Stock # 18.9028

This is an antique articulated reading table. An English, walnut Canterbury lectern with riser, dating to the Regency period, circa 1820.

- Articulates through several positions, with useful storage below
- Displays a desirable aged patina and in good order
- Select walnut stocks present fine grain interest
- Warm caramel hues beam beneath a quality wax polish finish
- Arranged with a suite of features perfect for the orator or conductor
- Generously proportioned lectern top, with removable paper rest
- Adjusts for angle and rake across two segmented risers
- Useful drawer to the side, dressed with a circular brass pull over foliate backplate
- Storage gallery shelf ideal for quickly swapping pages of speeches or notes
- Distinctive folio sleeves to the base in the Canterbury fashion
- Riding upon a quartet of brass castors beneath slender circular legs

Search [London Fine for #18.9028](#) , or scan the QR code for more photos and details

DIMENSIONS

Max Width: 52cm (20.5")
 Max Depth: 38.5cm (15.25")
 Lowered Height: 81.5cm (32")
 Height with 1st Bracket Raised: 105cm (41.25")
 Height with 2nd Bracket Raised: 106.5cm (42")
 Lectern Width: 50cm (19.75")
 Lectern Depth: 35cm (13.75")
 Drawer Width: 31.5cm (12.5")
 Drawer Depth: 39.5cm (15.5")
 Drawer Height: 4cm (1.5")

