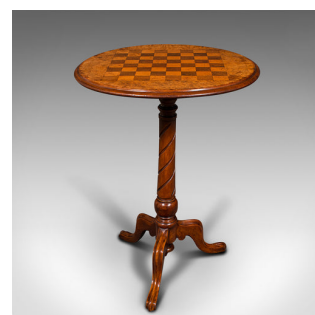


Small Antique Chess Table, English, Burr Walnut, Games, Victorian, Circa 1880



DESCRIPTION

Our Stock # 18.9281

This is a small antique chess table. An English, burr walnut games table, dating to the late Victorian period, circa 1880.

- Of petite proportion, with elegant craftsmanship
- Displays a desirable aged patina and in good order
- Circular burr walnut top offers fine grain interest and rich caramel hues
- Beautiful inlaid chess board to the top, measuring 30cm (11.75") across
- The board decorated in contrasting bleached walnut squares
- Raised upon a twist turned column, tapering gently to the collared neck
- Bulb carving unites the column to the distinctive base
- Standing upon a trio of broad cabriole legs with drop finial to centre

This is an attractive antique chess table, with wonderful burr walnut figuring. Solid joints and construction, delivered waxed, polished and ready for a game.

Search [London Fine for #18.9281](#) , or scan the QR code for more photos and details

DIMENSIONS

Max Width: 49cm (19.25")

Max Depth: 49cm (19.25")

Max Height: 68.5cm (27")

Chess Board Width: 30cm (11.75")

Chess Board Depth: 30cm (11.75")

