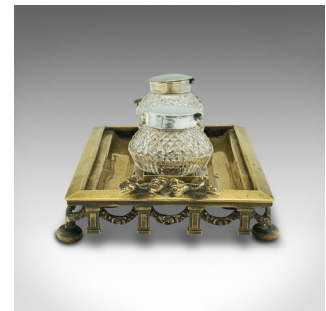
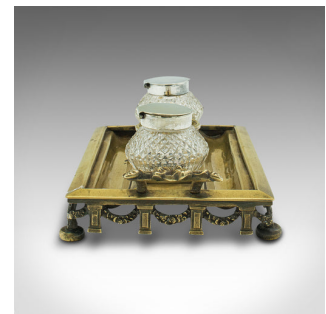


Antique Pen Tray, English, Brass, Silver Plate, Inkwell Stand, Edwardian, C.1910



DESCRIPTION

Our Stock # 18.8974

This is an antique pen tray. An English, brass and silver plated inkwell stand, dating to the Edwardian period and later, circa 1910.

- Compact and neat, with appealing tonality
- Displays a desirable aged patina and in good order
- Brass presents rich golden hues throughout
- Quality, later glass ink wells with diamond cut glass topped with EPNS lids
- Fascinating masks adorn the decorative handles

This is a charming antique pen tray, graced with fine colour and of useful form. Delivered polished and ready to use.

Search [London Fine for #18.8974](#) , or scan the QR code for more photos and details

DIMENSIONS

Max Width: 24cm (9.5")

Max Depth: 12.5cm (5")

Max Height: 7.5cm (3")

Ink Well Diameter: 5cm (2")

Ink Well Height: 5cm (2")

