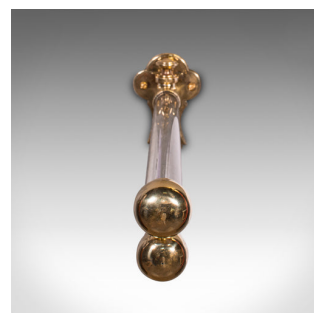
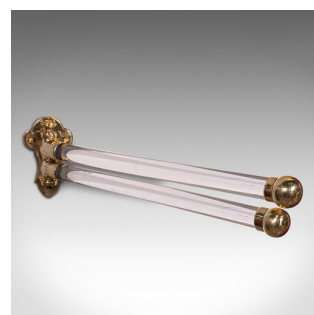


## Antique Mounted Towel Rail, English, Brass, Glass, Scarf Rack, Victorian, C.1850



### DESCRIPTION

Our Stock # 18.9284

This is an antique mounted towel rail. An English, brass and glass scarf rack, dating to the early Victorian period, circa 1850.

- Beautifully presented antique rail, with fascinating craftsmanship
- Displays a desirable aged patina and in good order
- Brass presents warm golden tones with a lightly polished finish
- Superb, solid 1 1/2" cylindrical glass bars free of marks or loss
- Folding articulation in the manner of the finest historic yacht interiors
  - Tactile brass mounts protect the end of each rail and articulate upon a shaped backplate
- Ideal in a grand bathroom for shaving towels, or accessorising a boudoir for silk scarves
- Two small mounting points set within the backplate for ease of hanging

This is a superb antique mounted towel rail, graced with elegance and wonderfully tactile to use. Delivered polished and ready to mount.

Search [London Fine for #18.9284](#), or scan the QR code for more photos and details

### DIMENSIONS

Max Width: 7cm (2.75")  
 Max Depth: 44cm (17.25")  
 Max Height: 13cm (5")  
 Tube Diameter: 3.5cm (1.5")

