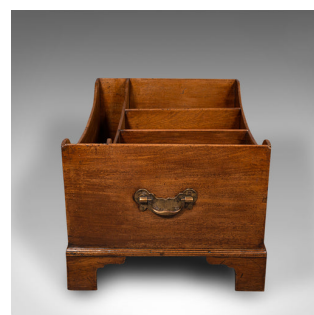


Large Antique Country House Canterbury, English, Folio Stand, Georgian, C.1800



DESCRIPTION

Our Stock # 18.9324

This is a large antique country house Canterbury. An English, mahogany five division folio stand, dating to the Georgian period, circa 1800.

- Superb proportion with generous compartments for documents or books
- Displays a desirable aged patina and in good original order
- Beautifully sunbathed stocks present fine grain interest and mellow caramel hues
- Arranged as a quintet of divisions, set into a shaped apron
- Outer partitions removable to enlarge the frontal storage area
- Perfect for use as an open cellarette for bottle display or storage
- Dressed to each end with brass drop handles over shaped backplates
- The whole raised upon four bold ogee bracket feet and riding smoothly upon inset castors

This is a delightful large antique country house Canterbury, with wonderful Georgian craftsmanship. Ideal for storage in a grand lounge or study. Solid joints and construction, delivered waxed, polished and ready for the home.

Search [London Fine for #18.9324](#) , or scan the QR code for more photos and details

DIMENSIONS

Max Width: 74.5cm (29.25")
 Max Depth: 54cm (21.25")
 Max Height: 44cm (17.25")
 Rear Division Width: 69cm (27.25")
 Rear Division Depth: 9.5cm (3.75")
 Rear Division Height: 22cm (8.75")
 Division Width: 16cm (6.25")
 Division Depth: 39.5cm (15.5")
 Division Height: 23cm (9")

LIST PRICE

£1,950.00

