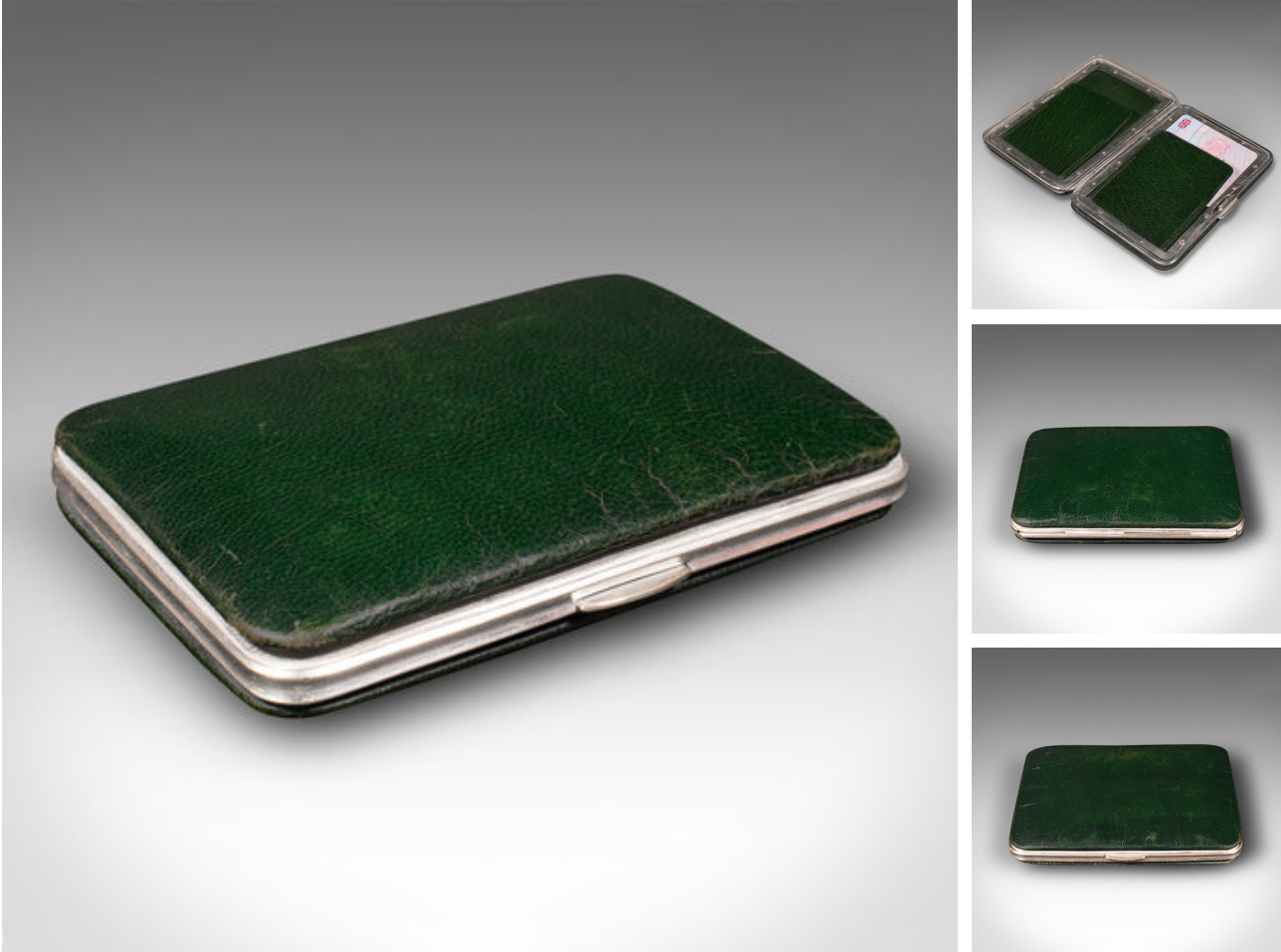


Antique Business Card Case, English, Leather, Wallet, After Asprey, Edwardian



DESCRIPTION

Our Stock # 18.9337

This is an antique business card case. An English, leather and silver plate gentleman's pocket wallet in the manner of Asprey, dating to the Edwardian period, circa 1910.

- Tactile and vibrant, a treat for housing your credentials
- Displays a desirable aged patina and in good original order
- Quality green leather delightfully aged and soft to the touch
- Well crafted Silver plated frame with inset clasp release
 - Pair of neatly stitched slides accept cards up to UK driving license size (84mm x 54mm)
- Unmarked as such, but displays the quality and distinctive colour of Asprey, London

This is a charming antique business card case, with a wonderfully tactile green leather finish and delightful craftsmanship. Delivered ready to enjoy.

Search [London Fine for #18.9337](#) , or scan the QR code for more photos and details

DIMENSIONS

Max Width: 10cm (4")

Max Depth: 7.5cm (3")

Max Height: 1.5cm (.5")

