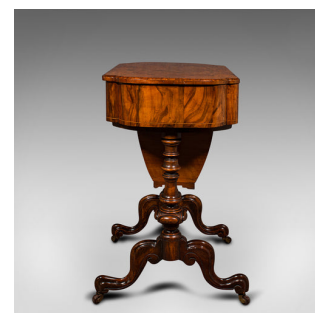


Antique Ladies Work Table, English, Walnut, Writing, Waring & Gillow, Victorian



DESCRIPTION

Our Stock # 18.9322

This is an antique lady of the house work table. An English, burr walnut and leather writing or sewing table by Waring & Gillow, dating to the late Victorian period, circa 1900.

- Delightfully presented table with striking figuring and colour
- Displays a desirable aged patina and in good order
- Burr walnut stocks present exceptional grain interest
- Rich caramel hues beam beneath a quality wax polish finish
 - Shield form to the well appointed upper, the top accentuated with fruitwood marquetry
 - Lid lifts to reveal a leather skiver, raising upon an adjustable rest
 - Pair of inset compartments flank the tooled and embossed, red leather pad
 - Useful partitioned drawer to fascia dressed with an inset brass lined lock – key absent
 - Lock engraved with the Waring & Gillow - London, Liverpool & Paris maker's mark
 - Deep wool bag sits beneath the table top, finished with marquetry decoration
 - Lined with a deep violet hue, the wool bag adds a generous storage space

DIMENSIONS

- Max Width: 64.5cm (25.5")
 - Max Depth: 50cm (19.75")
 - Max Height: 73.5cm (29")
 - Skiver Width: 31.5cm (12.5")
 - Skiver Depth: 26.5cm (10.5")
 - Wool Bag Interior Width: 30cm (11.75")
 - Wool Bag Interior Depth: 24cm (9.5")
 - Wool Bag Interior Height: 22cm (8.75")
- Find out more about Gillows of Lancaster here...

LIST PRICE

£2,950.00

