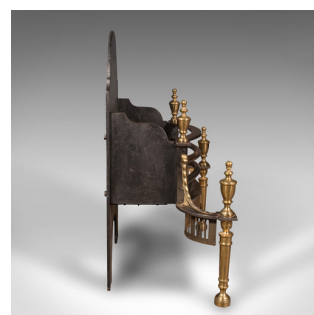


Antique Free-Standing Fireplace, English, Cast Iron, Fire Basket, Late Victorian



DESCRIPTION

Our Stock # 18.9026

This is an antique free-standing fireplace. An English, cast iron and brass fire basket, dating to the late Victorian period, circa 1890.

- Delightfully presented free-standing fire grate
- Displays a desirable aged patina and in good natural order
- Substantial cast iron resplendent in a consistent graphite finish
- Representing the Adam style with classical motif and forms
- Dome top fire back with sweeping buttresses hosting small finials
- Bow-front fire basket with a pair of patinated polished steel bars
- Attractive pair of classical finials stand upon a serpentine promontory
- Pierced brass fascia curves seductively to a pair of tapering front legs

This is a superb antique free-standing fireplace, a wonderful example of the Adam style. Beautifully presented for the larger, open fire hearth. Suitable for all fuel types. Delivered polished and ready to enjoy.

Search [London Fine for #18.9026](#) , or scan the QR code for more photos and details

DIMENSIONS

Max Width: 65.5cm (25.75")
 Max Depth: 34cm (13.5")
 Max Height: 70.5cm (27.75")
 Basket Width: 39cm (15.25")
 Basket Depth: 23cm (9")
 Basket Height: 15.5cm (6")

