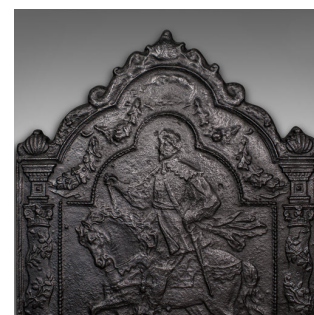


3' Tall, Heavy Antique Fire Back, English, Iron, Fireplace Reflector, Victorian



DESCRIPTION

Our Stock # 18.9361

This is a 3' tall and heavy antique fire back. An English, cast iron fireplace reflector with Carolean taste, dating to the late Victorian period, circa 1900.

- Imposing and substantial fire back with 17th century revival taste
- Displays a desirable aged patina and in good order throughout
- The heavy cast iron presents consistent graphite tones
- Suitable for the grander hearth with a weight of approximately 95kg (210 lb)
- Tall surmount hosts scrolled vine forms and shell motif
- Decorated in relief with a mounted rider, in the manner of Lord Fairfax (1612-1671)
- Instrumental in the restoration of the monarchy, Fairfax was a popular revival theme
- Further decorated with vines and pillars, the central scene accentuated with beading

This is a fascinating antique fire back, with 17th century revival taste of the Carolean/Restoration period. Classically decorative and suited for the larger fireplace. Delivered polished and ready to display.

Search [London Fine for #18.9361](#), or scan the QR code for more photos and details

DIMENSIONS

Max Width: 77.5cm (30.5")

Max Depth: 3cm (1.25")

Max Height: 102.5cm (40.25")

