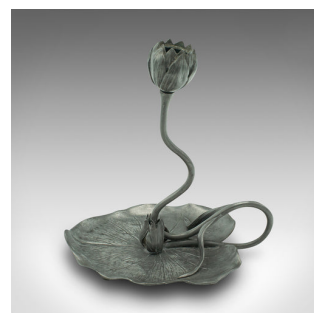
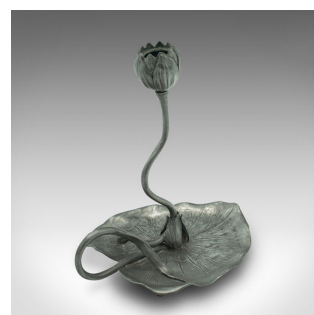
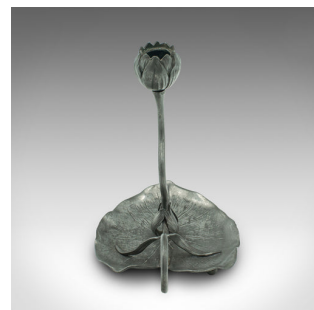


## Antique Art Nouveau Candlestick, French, Pewter, Decorative, Candle Holder, 1920



### DESCRIPTION

Our Stock # 18.9437

This is an antique Art Nouveau candlestick. A French, pewter decorative candle holder, dating to the early 20th century, circa 1920.

- Superb decorative appeal to this fascinating candle stand
- Displays a desirable aged patina throughout
- Crafted in water lily form, flourishing above a large pad leaf
- Lily bulb surrounds the 24mm diameter candle nozzle
- Inset handle winds its way from the stem in a gracefully natural arc
- Raised upon a quartet of small bun feet

This is a charming antique Art Nouveau candlestick with a wonderfully natural form. A treat to illuminate your room. Delivered polished and ready to display.

Search [London Fine for #18.9437](#) , or scan the QR code for more photos and details

### DIMENSIONS

Max Width: 14.5cm (5.75")

Max Depth: 20cm (7.75")

Max Height: 21.5cm (8.5")

Nozzle Diameter Width: 24mm (1")

