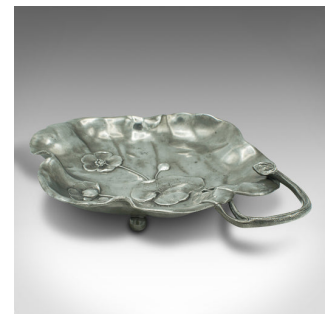


Antique Decorative Dish, German, Pewter, Bonbon Tray, Art Nouveau, Edwardian



DESCRIPTION

Our Stock # 18.9438

This is an antique decorative dish. A German, pewter bonbon tray in Art Nouveau taste, dating to the Edwardian period, circa 1910.

- Delightful dogwood blossom decor adorns this charming dish
- Displaying a desirable aged patina and in good order
- German pewter presents bright silver-grey tones
- Foliate pattern in relief, with a small handle crafted in the manner of a stem
- Raised upon a trio of small ball feet
- Marked to the base 'Silberzinn' for Silberzinn Jugendstil, Germany

This is a darling antique decorative dish with an appealing Art Nouveau finish. Delivered polished and ready to use or display.

Search [London Fine for #18.9438](#) , or scan the QR code for more photos and details

DIMENSIONS

Max Width: 29cm (11.5")

Max Depth: 22cm (8.75")

Max Height: 4cm (1.5")

