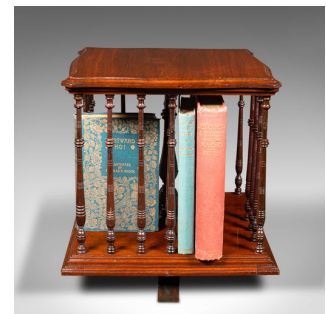


Antique Book Companion, English, Walnut, Rotary Bookstand, Edwardian, Circa 1910



DESCRIPTION

Our Stock # 18.9393

This is an antique book companion. An English, walnut rotary bookstand, dating to the Edwardian period, circa 1910.

- Beautifully crafted stand with skilfully turned detail
- Displays a desirable aged patina and in good order
- Select walnut stocks present fine grain interest throughout
- Rich caramel hues beam beneath a wax polish finish
- Arranged in four sections, each approximately hosting four novels
- Quartets of turned spindles separate each compartment
- Rotates smoothly around a central column
- Standing upon four block feet, dressed with small baize protective pads

This is a charming antique book companion, ideal for holding favourite titles close to hand in the lounge or reading nook. Of appealing quality to also suit a hotel reception. Solid joints and construction, delivered waxed, polished and ready for the home or institution.

Search [London Fine for #18.9393](#), or scan the QR code for more photos and details

DIMENSIONS

Max Width: 31cm (12.25")
 Max Depth: 32cm (12.5")
 Max Height: 34.5cm (13.5")
 Book Compartment Width: 12cm (4.75")
 Book Compartment Depth: 13.5cm (5.25")
 Book Compartment Height: 24cm (9.5")

LIST PRICE

£975.00

