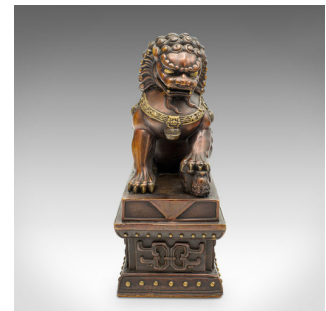
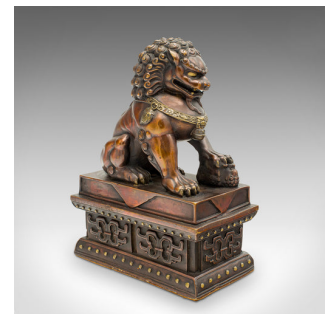


Pair Of Vintage Imperial Lion Statues, Chinese, Bronze, Bookends, Art Deco, 1940



DESCRIPTION

Our Stock # 18.9402

This is a pair of vintage Imperial Lion statues. A Chinese, bronze decorative ornament or bookends, dating to the late Art Deco period, circa 1940.

- Exceptional bronze patination to this delightful pair of lions
- Displaying a desirable aged patina and in good original order
- Superb colour to the bronze form, with amber to ochre hues
- Substantial in the hand at a weight of 2.99kg (6.59 lb) and 2.75kg (6.06 lb)
- Bold, sitting guardian lion figure with overt Oriental influence
- Great, exaggerated detail to the face and exuberant coat
- Opposite paws raised upon a brocade ball motif
- Deep socle bases accentuated with further Oriental patterns

This is a fascinating pair of vintage Imperial Lion statues, with exceptional colour. Ideal for the mantelpiece or as decorative bookends, this is a wonderful matched pair of the iconic guardian lion ornaments. Delivered polished and ready to display.

Search [London Fine for #18.9402](#) , or scan the QR code for more photos and details

DIMENSIONS

Max Width: 8cm (3.25")

Max Depth: 15cm (6")

Max Height: 20cm (7.75")

