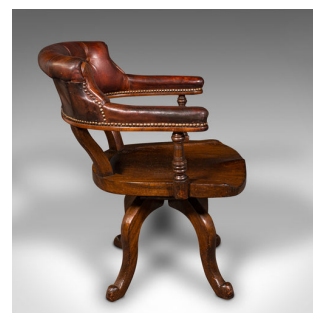
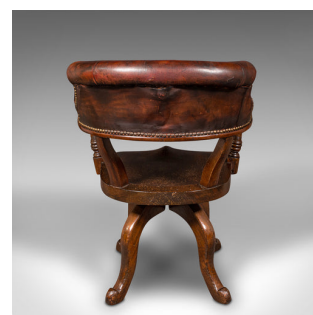


## Antique Porter's Hall Chair, English, Leather, Rotary Desk Seat, Victorian, 1880



### DESCRIPTION

Our Stock # 18.9029

This is an antique porter's hall chair. An English, mahogany and leather rotary desk seat, dating to the Victorian period, circa 1880.

- Superb colour and graceful appearance to this versatile chair
- Displays a desirable aged patina and in good order
- Select stocks present fine grain interest and rich caramel hues
- Deeply buttoned leather with beautiful ageing and colour
- Substantial rolled back rest with button finish, accentuated with brass press studs
- Raised upon a horseshoe frame with turned front supports, gently splayed to rear
- Saddle shaped seat with inset squab, rotating upon the stout base
- Quartet of swept cabriole legs with pronounced knees over deep pad feet

This is a wonderful antique porter's hall chair, graced with fine craftsmanship and aged colour. A treat for a reception room or home office. Solid joints and construction, delivered waxed, polished and ready for the home.

Search [London Fine for #18.9029](#) , or scan the QR code for more photos and details

### DIMENSIONS

Max Width: 60cm (23.5")  
 Max Depth: 67cm (26.5")  
 Max Height: 83cm (32.75")  
 Seat Width: 47.5cm (18.75")  
 Seat Depth: 47cm (18.5")  
 Seat Height: 42cm (16.5")

### LIST PRICE

£1,295.00

