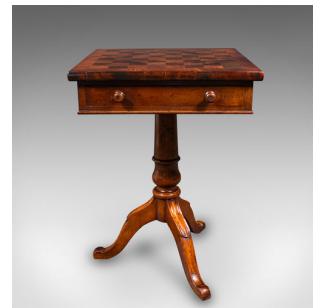


## Antique Drawing Room Chess Table, English, Games, Cards, Victorian, Circa 1860



### DESCRIPTION

Our Stock # 18.9464

This is an antique drawing room chess table. An English, mahogany and rosewood games table, dating to the mid Victorian period, circa 1860.

- Beautifully presented table, with a dashing chess board
- Displays a desirable aged patina and in good order
- Select stocks present fine grain interest throughout
- Deep caramel hues beam beneath a wax polish finish
- Alternating chess squares contrasting brilliantly in caramel and chestnut hues
- Full-width drawer to fascia, dressed with a pair of circular pulls
- Drawer interior with a trio of compartments, perfect for housing chess pieces
- Raised upon a trio of swept legs beneath a stout turned support

This is an delightful antique drawing room chess table, with a fine appearance and perfect for the lounge or study. Solid joints and construction, delivered waxed, polished and ready for the home.

Search [London Fine for #18.9464](#) , or scan the QR code for more photos and details

### DIMENSIONS

Max Width: 50cm (19.75")  
 Max Depth: 49.5cm (19.5")  
 Max Height: 71cm (28")  
 Board Width: 40.5cm (16")  
 Board Depth: 40.5cm (16")

