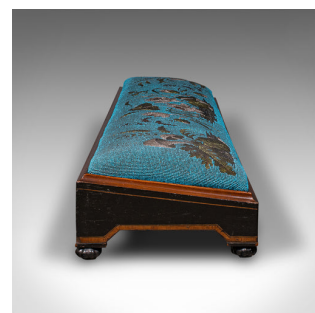


Antique Carriage Foot Rest, English, Beadwork Stool, Aesthetic Period, Victorian



DESCRIPTION

Our Stock # 18.9468

This is an antique carriage foot rest. An English, mahogany and boxwood beadwork cushion stool, dating to the late Victorian Aesthetic period, circa 1890.

- Delightfully eye-catching stool with generous proportion
- Displays a desirable aged patina and in good original order
- Ebonised stocks present deep black hues to the fascia
- Lighter boxwood elements show caramel hues
- Striking blue beadwork cushion remarkably intact for the age
- Foliate pattern of large Lilies with broad leaves and mushrooms
- Diamond marquetry inlay to the front fascia
- Raised upon quintet of distinctive gadrooned feet

This is a fascinating antique carriage foot rest, with striking beadwork and appealing colour. A treat for the lounge and of a generous size. Solid joints and construction, delivered waxed, polished and ready for the home.

Search [London Fine for #18.9468](#) , or scan the QR code for more photos and details

DIMENSIONS

Max Width: 114cm (45")
Max Depth: 27.5cm (10.75")
Max Height: 16cm (6.25")

