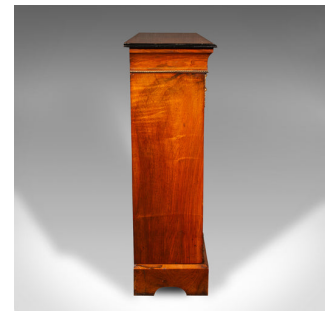


## Antique Twin Pier Cabinet, English, Walnut, Glazed Bookcase, Display, Victorian



### DESCRIPTION

Our Stock # 18.9460

This is an antique twin pier cabinet. An English, walnut glazed bookcase, dating to the Victorian period, circa 1870.

- Of superb appearance and craftsmanship, with appealing detail
- Displays a desirable aged patina and in good order
- Select walnut stocks present fine grain interest and rich caramel hues
- Ebonised stocks to the upper edge create an attractive contrast
- Wide crown moulding in cavetto form, decorated with inlaid foliate marquetry
- Pair of glazed cabinet doors with large, clear panels, offering a bright view inside
- Dressed with a shaped lock escutcheon – in working order, key present
- Eye-catching ormolu mounts adorn the upper section and cabinet door edge
- Original velvet interior with a pleasantly time-worn appearance
- Raised upon a quartet of bracket feet with shaped apron to front and sides

Search [London Fine for #18.9460](#) , or scan the QR code for more photos and details

### DIMENSIONS

Max Width: 120cm (47.25")  
 Max Depth: 36cm (14.25")  
 Max Height: 107cm (42.25")  
 Shelf Width: 107.5cm (42.25")  
 Shelf Depth: 24cm (9.5")  
 Shelf Height: 25.5cm (10")

