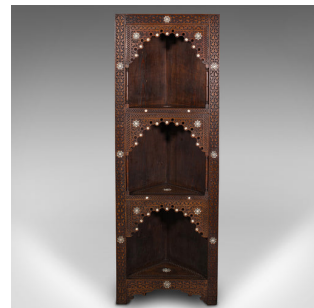


## Antique Corner Display Stand, Open Shelf Cabinet, Moorish Taste, Victorian, 1900



### DESCRIPTION

Our Stock # 18.9191

This is an antique corner display stand. A Middle Eastern, mahogany and pine open shelf cabinet in Moorish taste, dating to the late Victorian period, circa 1900.

- Wonderfully ornate in the usual Moorish way, with a trio of shelves
- Displays a desirable aged patina and in good order
- Carved fascia with bountiful relief pattern interest
- The whole presents deep russet and caramel hues throughout
- Three generous shelves of triangular form, with ornate bracket aprons
- Superb craftsmanship to the blind fretwork, presenting a distinctive appearance
- Accentuated with appealing Mother of Pearl inlays throughout
- Standing upon a pair bracket feet to the front

This is an attractive antique corner display stand, with superb fretwork detail and graced with the appealing Moorish taste. Can be used free-standing or within the corner of the room. Solid joints and construction, delivered waxed, polished and ready for the home.

Search [London Fine for #18.9191](#) , or scan the QR code for more photos and details

### DIMENSIONS

Max Width: 59.5cm (23.5")

Max Depth: 30cm (11.75")

Max Height: 171.5cm (67.5")

