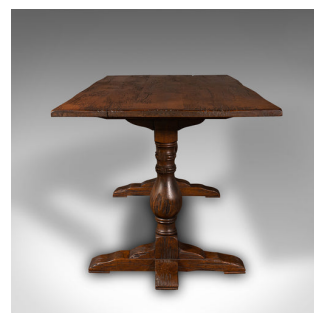


## Antique 6 Seat Refectory Table, English, Oak, Farmhouse, Dining, Victorian, 1900



### DESCRIPTION

Our Stock # 18.9429

This is an antique 6 seat refectory table. An English, oak farmhouse dining table, dating to the late Victorian period, circa 1900.

- Delightfully substantial table with appealing rustic character
- Displays a desirable aged patina with charmingly time worn top
- Select oak stocks present fine grain interest and rich caramel hues
- Generously proportion, with comfortable seating for six
- Tactile and robust top with a thickness of 2.5cm (1")
- Diners sit comfortably within a kneeheight of 71.5cm (28.25")
- Superb baluster turned legs with collar detail supporting the upper
- Shaped bracket feet united with a broad stretcher rail

This is a wonderful antique refectory table, with comfortable seating for six diners. Graced with a charming farmhouse appeal and dependable craftsmanship. Solid joints and construction, delivered waxed, polished and ready for the home.

Search [London Fine for #18.9429](#) , or scan the QR code for more photos and details

### DIMENSIONS

Max Width: 167.5cm (66")

Max Depth: 81cm (32")

Max Height: 74cm (29.25")

### LIST PRICE

£1,695.00

