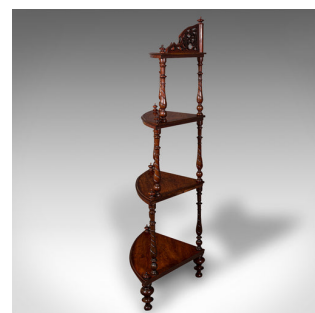


Antique Corner Whatnot, English, Walnut, Country House Display Stand, Victorian



**DESCRIPTION**

Our Stock # 18.9540

This is an antique corner whatnot. An English, walnut country house display stand, dating to the Victorian period, circa 1860.

- Graceful cascading shape to this delightful corner stand
- Displays a desirable aged patina and in good order
- Select walnut stocks present fine grain interest
- Superb colour depth, with rich russet hues
- Striking pierced fretwork adorns the upper shelf
- Trio of lower shelves of graduated depth, with fan-shaped profile
- Each shelf supported upon deft turned columns with reeded detail
- Raised upon a set of three cupped feet with bun toes

This is an attractive antique corner whatnot, with a highly appealing graduated form. Solid joints and construction, delivered waxed, polished and ready for the home.

Search [London Fine for #18.9540](#) , or scan the QR code for more photos and details

**DIMENSIONS**

- Max Width: 65cm (25.5")
- Max Depth: 40.5cm (16")
- Max Height: 140.5cm (55.25")
- Shelf Height 1: 30cm (11.75")
- Shelf Height 2: 33cm (13")
- Shelf Height 3: 36cm (14.25")

**LIST PRICE**

£985.00

