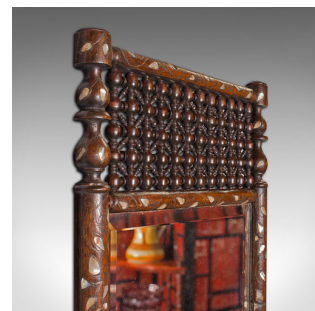
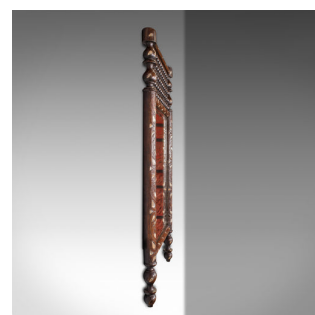


Antique Decorative Wall Mirror, Anglo Indian, Colonial, Late Victorian, C.1900



DESCRIPTION

Our Stock # 18.9541

This is an antique decorative wall mirror. An Indian, mahogany and glass colonial mirror, dating to the late Victorian period, circa 1900.

- Of unusual form and decorative finish
- Displaying a desirable aged patina throughout
- Select stocks accentuated with delightful Mother of Pearl inlay
- Deep russet hues to the frame provide contrast to the bright mirror plate
- Unusual checkerboard turned beads accentuate the upper
- Quality bevelled mirror glass presents minimal foxing
- Leaf pattern adds decoration to the frame
- Dressed with a pair of mounting loops for ease of wall hanging

This is a fascinating antique decorative wall mirror, with a quality, bright mirror plate set within an unusual frame. Delivered polished and ready to mount.

Search [London Fine for #18.9541](#) , or scan the QR code for more photos and details

DIMENSIONS

- Max Width: 39.5cm (15.5")
- Max Depth: 3cm (1.25")
- Max Height: 66cm (26")
- Mirror Plate Width: 28.5cm (11.25")
- Mirror Plate Height: 35.5cm (14")

