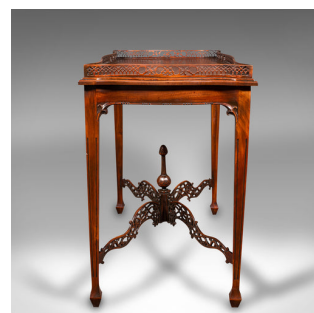


Vintage Galleried Silver Table, English, Ornate, Chippendale Revival, Late 20th



DESCRIPTION

Our Stock # 18.9543

This is a vintage galleried silver table. An English, mahogany ornate table in Chippendale revival taste, dating to the late 20th century, circa 1980.

- Striking example of revival furniture, graced with superb fretwork
- Displays a desirable aged patina and in good order
- Select stocks present rich caramel hues throughout with fine grain interest
- Strong Chippendale overtones present themselves with pierced detail
- Pierced fretwork gallery upper adorns the shaped table top
- Small leaf shaped flourishes decorate the beaded aprons
- Raised upon a quartet of gently tapered legs with reeded finish over spade feet
- Exquisite pierced fretwork stretcher rails unite the legs, with carved finial to centre

This is a fascinating vintage galleried silver table, with strong Chippendale revival taste. Sure to enhance the centre of your living room or reception hall. Solid joints and construction, delivered waxed, polished and ready for the home.

Search [London Fine for #18.9543](#) , or scan the QR code for more photos and details

DIMENSIONS

Max Width: 87cm (34.25")
 Max Depth: 48cm (19")
 Max Height: 71cm (28")
 Top Width: 79.5cm (31.25")
 Top Depth: 39.5cm (15.5")
 Top Height: 3.5cm (1.5")

LIST PRICE

£875.00

