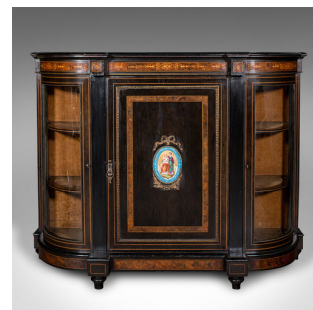


## Antique Drawing Room Credenza, English, Walnut, Display Cabinet, Victorian, 1850



### DESCRIPTION

Our Stock # 18.9106

This is an antique drawing room credenza. An English, ebonised walnut and glass display cabinet, dating to the early Victorian period, circa 1850.

- Mid-19th century decadence, with an exquisite appearance throughout
- Displays a desirable aged patina and in good order
- Ebonised frame presents deep tonality, with fine grain interest to the quality walnut inlay
- Demi-lune breakfront profile, with an arrangement of large central cupboard with outer cabinets
- Beautifully adorned central door with painted figural medallion in vibrant colours
- Gilt ormolu beading, flowing sash motif and wreathed sheaf decor adds further interest
- Dressed with a gilt finished drop handle over shaped lock escutcheon – key absent
- Door opens to reveal a generous cupboard with shelf to centre over a velvet lined base
- Original bowed corner glass a treat of clarity and spectacle
- Each door replete with inset brass-lined locks – two keys present
- Pairs of corner shelves ideal for displaying small ornaments

### DIMENSIONS

Max Width: 138cm (54.25")

Max Depth: 44cm (17.25")

Max Height: 106.5cm (42")

Centre Cabinet:

Shelf Width: 61cm (24")

Shelf Depth: 26.5cm (10.5")

Upper Shelf Height: 48cm (19")

Lower Shelf Height: 40cm (15.75")

### LIST PRICE

£2,450.00

