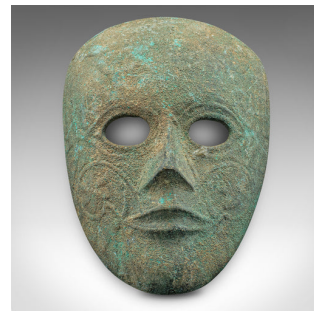


Small Antique Decorative Mask, Continental, Weathered Bronze, Georgian, C.1800



DESCRIPTION

Our Stock # 18.9574

This is a small antique decorative mask. A Continental, weathered bronze mask with Eastern overtones, dating to the Georgian period, circa 1800.

- Fascinating bronze mask with appealing weathering
- Displays a desirable aged patina in good original order
- Patinated bronze presents mottled verdigris hues
- Distinctive pointed nose, pursed mouth and oval eyes
- Of diminutive proportion at smaller than adult human size

This is a charming antique decorative mask, with a pleasing weathered appearance. Delivered ready to display.

Search [London Fine for #18.9574](#), or scan the QR code for more photos and details

DIMENSIONS

Max Width: 10.5cm (4.25")

Max Depth: 4.5cm (1.75")

Max Height: 14cm (5.5")

