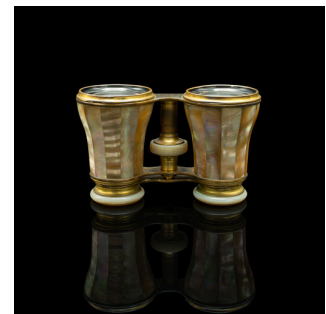


Pair Of Vintage Cased Opera Glasses, French, Brass, Binocular, Mid 20th Century



DESCRIPTION

Our Stock # 18.9559

This is a pair of vintage cased opera glasses. A French, brass and Mother of Pearl Galilean binocular, dating to the mid 20th century, circa 1950.

- Charming optical set, ideal for the theatre or event
- Displaying a desirable aged patina and in good order
- Quality gilt brass frame with minimal tarnishing
- Hand grips accentuated with striking faceted Mother of Pearl
- Clear, bright objectives offer a useful optical image
- Focus can be adjusted with a knurled crown wheel to centre
- Offering a 2cm (0.75") focal adjustment range
- Eye cups with Bakelite rings, dressed with Mother of Pearl fascia
- Etched to the eye-cup, the maker's mark for Le Maire et Paris
- Presented in a velvet-lined carry case with small brass clasp
- Case lid bears the retailer's mark for Millard & Son, London

Search [London Fine for #18.9559](#) , or scan the QR code for more photos and details

DIMENSIONS

- Max Width: 11cm (4.25")
- Min Depth: 7cm (2.75")
- Max Depth: 9cm (3.5")
- Max Height: 5cm (2")
- Case Width: 12.5cm (5")
- Case Depth: 6.5cm (2.5")
- Case Height: 9cm (3.5")

LIST PRICE

£725.00

