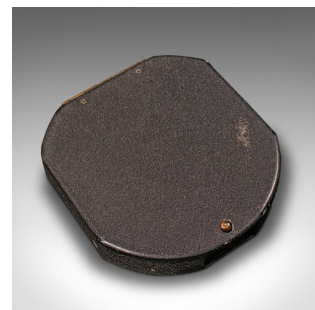


## Vintage Military Compass, American, Navigation Aid, Keuffel & Esser, 5600X Model



### DESCRIPTION

Our Stock # 18.9595

This is a vintage military compass. An American, aluminium and glass navigation aid by Keuffel & Esser, dating to the early 20th century, circa 1930.

- Fascinating example of the 5600X model military compass
- Displays a desirable aged patina throughout, in working order
- Tactile crackle finish aluminium displays appealing tonality
- Brass fittings to the dial edge and hinge present golden hues
- Generously sized compass dial with a diameter of 60mm (2.25")
  - Displays the four main cardinal points, the direction arrow accentuated with red paint
- Brass outer ring annotated with segments through 360 degrees
- Dial presents the Keuffel & Esser Co - New York maker's mark

This is a wonderful vintage military compass, with a light time-worn appearance commensurate with age and use. In working order, but ideal as desk or cabinet display. Delivered polished and ready to use.

Search [London Fine for #18.9595](#), or scan the QR code for more photos and details

### DIMENSIONS

Max Width: 7.5cm (3")  
 Max Depth: 8.5cm (3.25")  
 Max Height: 2cm (.75")  
 Dial Diameter: 6cm (2.25")

### LIST PRICE

£195.00

