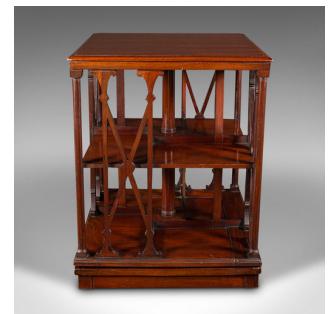


Antique Desktop Rotary Bookcase, English Walnut, Revolving Book Shelf, Edwardian



DESCRIPTION

Our Stock # 18.9632

This is an antique desktop rotary bookcase. An English, walnut revolving book shelf with Aesthetic period overtones, dating to the Edwardian period, circa 1910.

- Charmingly decorative rotary book rest, ideal for the desktop or chair-side
- Displaying a desirable aged patina and in very good order
- Select walnut stocks show fine grain interest and rich caramel hues
- Delightful overtones of the Aesthetic period to the fretwork decor
- Arranged as eight equal shelves across two tiers, accepting small novel sized books
- Rotating smoothly upon a square base for ease of access to your chosen title

This is a fascinating antique desktop rotary bookcase, with fine craftsmanship and ideally sized for popular vintage and antique novels. Solid joints and construction, delivered waxed, polished and ready for the home.

Search [London Fine for #18.9632](#) , or scan the QR code for more photos and details

DIMENSIONS

Max Width: 41.5cm (16.25")
 Max Depth: 41.5cm (16.25")
 Max Height: 53cm (20.75")
 Shelf Width: 21cm (8.25")
 Shelf Depth: 14cm (5.5")
 Shelf Height: 20cm (7.75")

LIST PRICE

£1,195.00

