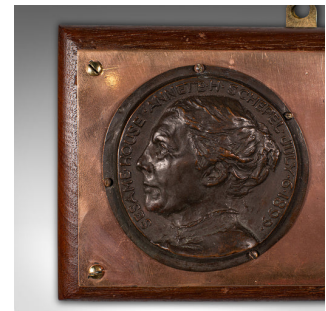
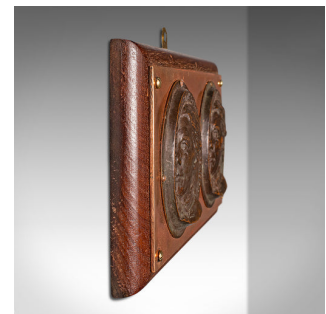


## Antique Mounted Portrait Plaque, English, Bronze, Decor, Wall Panel, Victorian



### DESCRIPTION

Our Stock # 18.9596

This is an antique mounted portrait plaque. An English, bronze and mahogany decorative wall panel, dating to the late Victorian period, circa 1900.

Sesame House was established in Hampstead, London in 1899 as a society to help aid the advancement of educational reform. German Annete H. Schepel was invited to become the society's first principle and is cast here in portrait relief.

- Fascinating ephemera, relating to historic turn-of-the-century reformers
- Displaying a desirable aged patina throughout
- Mounted upon mahogany and polished bronze, hosting a pair of medallions
- Quality bronze portraits adorn each medallion, showing Principle Schepel in cameo
- Dressed with a brass mounting loop for ease of hanging

This is a wonderful antique mounted portrait plaque, with a fascinating historical link to Victorian London and the air of social reform that permeated the end of that century. Delivered ready to mount.

Search [London Fine for #18.9596](#) , or scan the QR code for more photos and details

### DIMENSIONS

Max Width: 25cm (9.75")

Max Depth: 3cm (1.25")

Max Height: 15.5cm (6")

### LIST PRICE

£895.00

