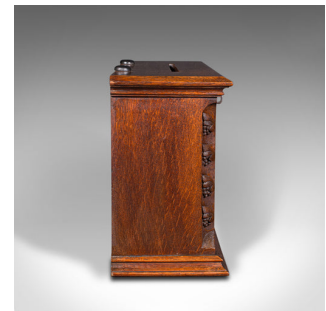


Antique Hotel Key Box, Scottish, Oak, Counter Letterbox, Gothic Taste, Victorian



DESCRIPTION

Our Stock # 18.9589

This is an antique hotel key box. A Scottish, oak countertop letterbox with Gothic revival taste, dating to the Victorian period, circa 1870.

- Perfect for a country house hotel, with appealing carved detail
- Displaying a desirable aged patina and in good order
- Select Oak stocks present fine grain interest throughout
- Rich caramel hues beam beneath a wax polish finish
- Plinth top hosts a wide opening, ideal for room keys or notes
- Fall front door hosts a clear, bright oval viewing window
- Foliate carved spandrels accentuate the door in quadrants
- Canted corner pillars host relief carved grape bunches

This is a delightful antique hotel key box, with quality Scottish oak crafted in the Gothic taste. A treat for a boutique hotel or artisan property. Delivered ready for the countertop.

Search [London Fine for #18.9589](#) , or scan the QR code for more photos and details

DIMENSIONS

Max Width: 46cm (18")

Max Depth: 17cm (6.75")

Max Height: 29.5cm (11.5")

Open Depth: 38.5cm (15.25")

