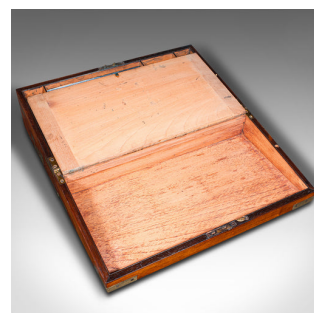


## Antique Campaign Writing Slope, English, Walnut, Correspondence Box, Victorian



### DESCRIPTION

Our Stock # 18.9613

This is an antique military campaign writing slope. An English, walnut and leather correspondence box, dating to the early Victorian period, circa 1850.

- Finely crafted writing slope, used in period when away from home
- Displaying a desirable aged patina and in good order
- Select walnut stocks show fine grain interest and rich caramel hues
- Tooled and embossed leather skiver in a charming bottle green hue
- Unmarked brass name plaque to lid, ideal for personalisation
- Case fascia dressed with a brass lock escutcheon – in working order, key present
- Outfitted with a pair of brass recessed cup handles, in the campaign manner
- Corners accentuated with polished brass cappings
- Side drawer held securely, accessed by removing interior pin
- Pen tray and ink well compartments to the upper edge of the interior
- Each half of the skiver lifts to gain access to a documents compartment

Search [London Fine for #18.9613](#), or scan the QR code for more photos and details

### DIMENSIONS

Max Width: 45.5cm (18")  
 Max Depth: 25cm (9.75")  
 Max Height: 15cm (6")  
 Extended Width: 45.5cm (18")  
 Extended Depth: 50.5cm (20")  
 Extended Height: 11.5cm (4.5")  
 Skiver Width: 40cm (15.75")  
 Skiver Depth: 40.5cm (16")

