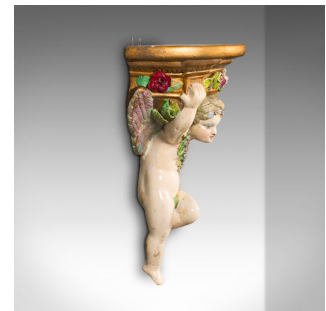
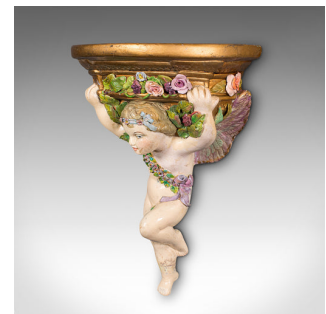


Antique Decorative Clock Mount, English, Plaster, Wall Sconce, Early Victorian



DESCRIPTION

Our Stock # 18.9624

This is an antique decorative clock mount. An English, hand painted plaster angelic wall sconce, dating to the early Victorian period, circa 1850.

- Distinctive and of superb detail, a treat for your wall
- Displaying a desirable aged patina throughout
- Figurative angel form, the wings spread beneath the demi-lune surface
- Hand-painted in a colourful palette, the gilt hues particularly eye-catching
- Dressed in a foliate sash, the angel appears to be hovering in place
- Relief flowerheads accentuate the form with appealing colour
- Pair of small mounting loops aid ease of wall hanging

This is a fascinating antique decorative clock mount, ideal for wall hanging and hosting small items. A charming accent piece, delivered ready to display.

Search [London Fine for #18.9624](#) , or scan the QR code for more photos and details

DIMENSIONS

Max Width: 21.5cm (8.5")

Max Depth: 11.5cm (4.5")

Max Height: 29cm (11.5")

LIST PRICE

£895.00

