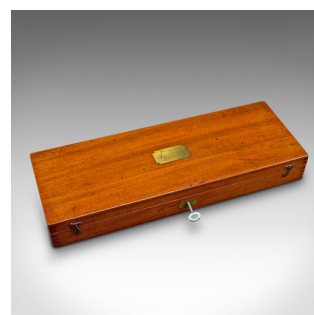


Antique Draughtsman's Tool Set, English, Cartography, Instruments, Edwardian



DESCRIPTION

Our Stock # 18.9408

This is an antique master draughtsman's tool set. An English, case of cartographer's drawing instruments, dating to the Edwardian period, circa 1910.

- Comprehensive set of 17 pieces, presented in a quality case
- Displaying a desirable aged patina and in good order
- Mahogany case presents warm caramel hues and fine grain interest
- Nickel and celluloid construction to the tactile tool set
- Offers a trio of compass, three pointers and four accessory heads
- Also including two rulers, one of the folding variety
- Lift-out tray reveals two further rulers and two Marquois Scales
- Fascia dressed with a brass lock escutcheon — in working order, key present

This is a delightful antique master draughtsman's tool set, with a comprehensive set of 17 tools and accessories, ideal for the enthusiast or collector. Delivered ready to enjoy.

Search [London Fine for #18.9408](#) , or scan the QR code for more photos and details

DIMENSIONS

Max Width: 36.5cm (14.25")

Max Depth: 13.5cm (5.25")

Max Height: 5cm (2")

LIST PRICE

£985.00

