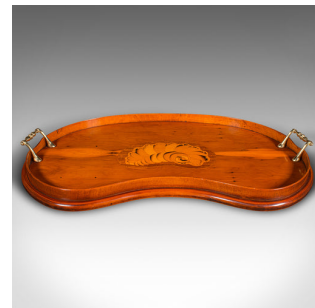


Vintage Decorative Afternoon Tea Tray, English, Serving Platter, Regency Taste



DESCRIPTION

Our Stock # 18.9619

This is a vintage decorative afternoon tea tray. An English, yew and mahogany inlaid serving platter in Regency revival taste, dating to the late 20th century, circa 1980.

- Delightful revival craftsmanship, ideal for social gatherings
- Displays a desirable aged patina and in good order throughout
- Select yew wood stocks present fine grain interest and rich caramel hues
- Centrepiece scallop shell motif set shows great detail
- Dressed with rolled brass carry handles to either end
- Finished with an emerald green protective baize to the base

This is an attractive vintage decorative afternoon tea tray, with a tasteful Regency revival form and generously sized. Solid joints and construction, delivered ready to serve.

Search [London Fine for #18.9619](#) , or scan the QR code for more photos and details

DIMENSIONS

Max Width: 59cm (23.25")
 Max Depth: 36.5cm (14.25")
 Max Height: 5.5cm (2.25")
 Internal Width: 55.5cm (21.75")
 Internal Depth: 29.5cm (11.5")
 Internal Height: 2cm (.75")

LIST PRICE

£495.00

