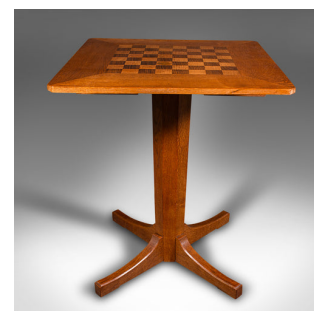
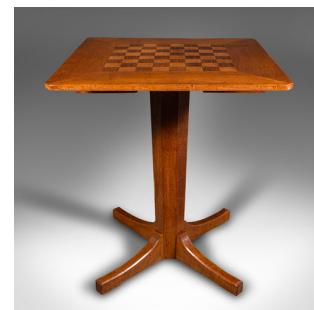


Antique Chess Table, English Oak, Games Table, Cotswold School, Mid 20th Century



DESCRIPTION

Our Stock # 18.9670

This is a vintage chess table. An English, oak, satinwood and walnut games table in Cotswold School taste, dating to the mid 20th century, circa 1950.

- Delightfully presented table with accompanying chess set
- Displays a desirable aged patina and in good order
- Select oak stocks show fine grain interest and wisps of medullary rays
- Sumptuous caramel hues accentuate the whole
- Generously sized playing surface, with rounded corners
- Marquetry chess board inlaid in satinwood and walnut
- Pair of drawers set beneath the board, lined with red leather
- Raised upon a distinctive tapering column with a quartet of trestle feet

This is a charming vintage chess table, with a striking appearance and craftsmanship in the manner of the Cotswold School and Arts & Crafts movement. A treat for the lounge or drawing room. Solid joints and construction, delivered ready for the home.

Search [London Fine for #18.9670](#), or scan the QR code for more photos and details

DIMENSIONS

Max Width: 60.5cm (23.75")
 Max Depth: 60.5cm (23.75")
 Max Height: 71.5cm (28.25")
 Board Width: 35.5cm (14")
 Board Depth: 35.5cm (14")

LIST PRICE

£1,695.00

