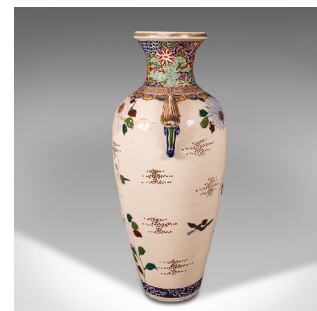


## Tall Pair Of Vintage Satsuma Vases, Japanese, Ceramic, Flower, Oriental Art Deco



### DESCRIPTION

Our Stock # 18.9505

This is a tall pair of vintage Satsuma vases. A Japanese, ceramic flower urn in Oriental Art Deco taste, dating to the mid 20th century, circa 1940.

- Classically decorative examples of Japanese ceramics
- Displaying a desirable aged patina - both in good order
- Quality ceramic free of cracks across both vases
- Finished in a cream coloured ground with a light glaze
- Main body decorated with delicate flowerheads in pale blue and pink hues
- Pair of vestigial handles, with gilt finished wing forms over scrolled motif
- Shaped neck finished with a distinctive raised enamel pattern
- Tactile moriage finish adds surface detail across the form

This is a delightful pair of vintage Satsuma vases. Useful accent pieces for any room, decorated with an abundance of traditional Japanese motif. Delivered ready for the home.

Search [London Fine for #18.9505](#) , or scan the QR code for more photos and details

### DIMENSIONS

Max Width: 20.5cm (8")  
Max Depth: 16.5cm (6.5")  
Max Height: 41cm (16.25")  
Opening Diameter: 5cm (2")

### LIST PRICE

£1,195.00

