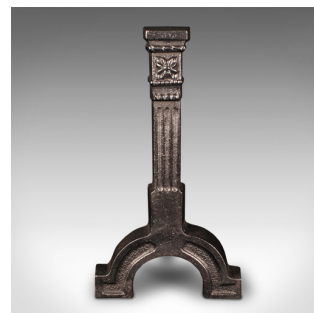


## Large Pair Of Antique Andirons, English, Cast Iron, Fire Dog, Heavy, Victorian



## DESCRIPTION

Our Stock # 18.9631

This is a large pair of antique andirons. An English, cast iron fire dog, dating to the late Victorian period, circa 1900.

- Reassuringly robust, ideal for hosting a substantial fire basket
- Displaying a desirable aged patina and in good order
- Quality cast iron presents deep tonality throughout
- Accentuated with traditional Greek pillar decor
- Shaped arch front feet with a deep rear rest
- Heavy in the hand at a weight of 7.6kg and 7.3kg respectively (16.75 lb & 16 lb)

This is an attractive pair of antique andirons, with a generous size and substantial nature. Ideal for the larger fireplace. Delivered ready to use.

Search [London Fine for #18.9631](#) , or scan the QR code for more photos and details

## DIMENSIONS

Max Width: 22cm (8.75")  
Max Depth: 26.5cm (10.5")  
Max Height: 39cm (15.25")

## LIST PRICE

£395.00

