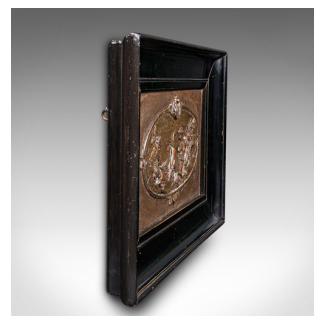


## Antique Classical Wall Frieze, Continental, Relief Plaque, Grand Tour, Victorian



## DESCRIPTION

Our Stock # 18.9698

This is an antique classical wall frieze. A Continental, silvered copper Grand Tour relief plaque in later frame, dating to the late Victorian period, circa 1880.

- Wonderful classical mythology scene in charming relief
- Displays a desirable aged patina throughout
- Silvered copper presents light amber and steel grey hues
- Redolent of Ariadne's abandonment on the island of Naxos by Theseus
- Set within a deep frame, a later addition with framer's name to rear
- Dressed with a mounting wire for ease of hanging

This is a fascinating antique classical wall frieze, with a traditional art influence to the relief cast plaque. Delivered ready to mount.

Search [London Fine for #18.9698](#) , or scan the QR code for more photos and details

## DIMENSIONS

Max Width: 33.5cm (13.25")

Max Depth: 3.5cm (1.5")

Max Height: 24cm (9.5")

## LIST PRICE

£675.00

