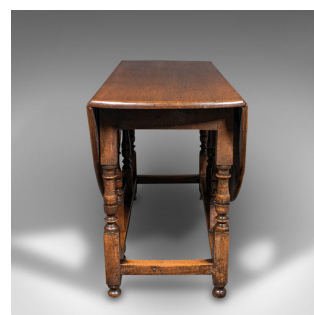
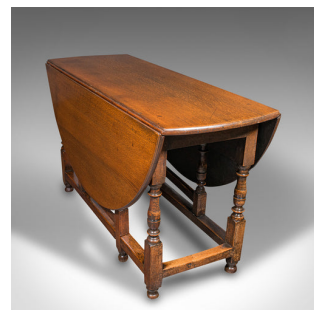


## Antique 4-6 Seat Gate Leg Table, English, Oak, Extending, Farmhouse, Georgian



### DESCRIPTION

Our Stock # 18.9668

This is an antique 4-6 seat gate leg table. An English, oak oval extending farmhouse table, dating to the early Georgian period, circa 1750.

- Of superb classic farmhouse appeal and beautifully figured
- Displays a desirable aged patina and in good order throughout
- Select oak stocks present fine grain interest
- Deep caramel hues bask beneath a wax polish finish
- Easily stowed when not in use with narrow profile, and useful drawer to one end
- Folds outwards into a generous oval form with broad drop leaves
- Each of the six legs with turned and collared finish
- Standing upon squat bun feet, the gate-leg pair articulate to support the leaves

This is a distinguished antique 4-6 seat gate-leg table, with desirable oak figuring and of useful proportion. Classic farmhouse appeal lending itself to a provincial kitchen or diner. Solid joints and construction, delivered ready for the home.

Search [London Fine for #18.9668](#), or scan the QR code for more photos and details

### DIMENSIONS

Max Width: 137cm (54")  
 Max Depth: 52cm (20.5")  
 Max Height: 76.5cm (30")  
 Extended Width: 137cm (54")  
 Extended Depth: 153cm (60.25")  
 Extended Height: 76.5cm (30")

### LIST PRICE

£2,450.00

