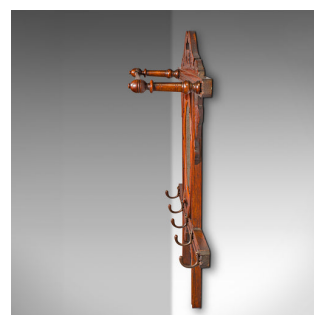
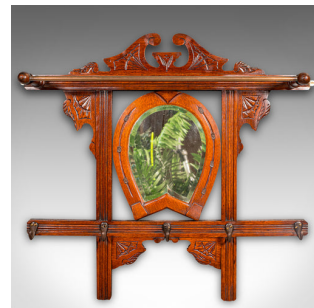


Antique Cheltenham Mirror, English, Oak, Hallway Rack, Cloak Hooks, Edwardian



DESCRIPTION

Our Stock # 18.9707

This is an antique Cheltenham mirror. An English, oak and glass hall rack with equine overtones, dating to the Edwardian period, circa 1910.

- Superb mirror, ideal for the hallway or a riding stables
- Displays a desirable aged patina and in good order
- Oak stocks present fine grain interest and rich caramel hues
- Quality bevelled mirror plate lightly aged with minimal foxing
- Double pediment sits prominently above the upper scarf rail
- Distinctive mirror set within a horse shoe motif frame
- Offers a set of five cloak hooks to the lower section
- The frame adorned with carved decorative fan details
- Dressed with a pair of brass hanging loops for ease of mounting

This is a fascinating antique Cheltenham mirror, with a suite of hooks and scarf rail well suited to reception hall use, with the horseshoe motif to the mirror surround lending itself to a riding stables setting. Solid joints and construction, delivered ready for the home or institution.

DIMENSIONS

Max Width: 85cm (33.5")
 Max Depth: 19.5cm (7.75")
 Max Height: 87.5cm (34.5")
 Mirror Plate Width: 21.5cm (8.5")
 Mirror Plate Height: 24.5cm (9.75")

LIST PRICE

£895.00



Search [London Fine](#) for #18.9707, or scan the QR code for more photos and details

+44 (0) 207 1833 511

London Fine Ltd
 The Antique Village
 The Old Whiteways Cider Factory
 Hele, Devon, EX5 4PW

sales@londonfine.co.uk
 E. & O. E.