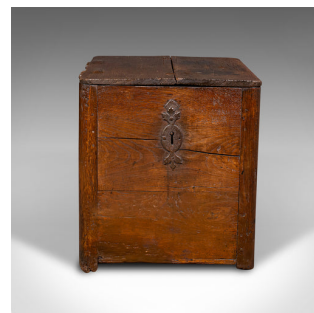
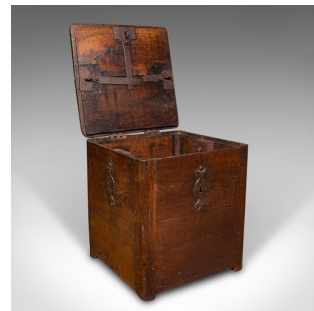


## Antique Mail Carriage Strong Box, English, Oak, Security Chest, Early Georgian



## DESCRIPTION

Our Stock # 18.9761

This is an antique mail carriage strong box. An English, oak security chest, dating to the early Georgian period, circa 1720.

- Fascinating George I lock box from the time of the highwayman
- Displays a desirable aged patina throughout
- Wonderfully aged antique oak stocks show fine grain interest
- Presenting deep caramel hues and wisps of medullary rays
- Of stout construction, ideal for use as an occasional seat
- Dressed to three sides with long cast iron escutcheons – keys absent
- Distinctive antique locks to the pleasingly clean interior

This is an intriguing antique mail carriage strong box, conjuring the romanticised notion of highwaymen and folk heroes that patrolled the streets of early Georgian Britain. Of substantial oak stocks and robust as an occasional seat within the home. Solid joints and construction, delivered ready to display or enjoy.

Search [London Fine for #18.9761](#) , or scan the QR code for more photos and details

## DIMENSIONS

Max Width: 41cm (16.25")  
Max Depth: 42cm (16.5")  
Max Height: 45cm (17.75")  
Interior Width: 36cm (14.25")  
Interior Depth: 36cm (14.25")  
Interior Height: 33.5cm (13.25")

## LIST PRICE

£2,450.00

