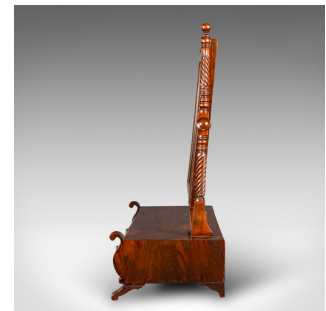
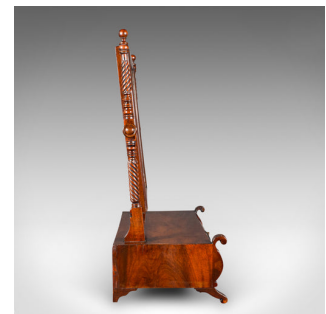


Antique Dressing Mirror, English, Tabletop, Bedroom, Early Victorian, Circa 1850



DESCRIPTION

Our Stock # 18.9784

This is an antique dressing mirror. An English, flame mahogany bedroom tabletop mirror, dating to the early Victorian period, circa 1850.

- Gaze upon this fascinating dressing mirror, with attractive finish
- Displays a desirable aged patina throughout
- Select flame stocks present fine grain interest and rich russet hues
- Original plate displaying gentle foxing, commensurate with age
- Of generous proportion with a well-sized mirror and wide base
- Striking reeded supports enclose the articulated mirror
- Arrangement of two cushion drawers with superb barrel front form and brass drop handles
- Scrolled mounts accentuate the corners with carved leaf detailing

This is an appealing antique dressing mirror, offering a desirably foxed, original mirror plate and of good proportion. Solid joints and construction, delivered ready for the home.

Search [London Fine for #18.9784](#) , or scan the QR code for more photos and details

DIMENSIONS

Max Width: 60cm (23.5")
 Max Depth: 26cm (10.25")
 Max Height: 61cm (24")
 Mirror Plate Width: 44.5cm (17.5")
 Mirror Plate Height: 34cm (13.5")
 Drawer Width: 25cm (9.75")
 Drawer Depth: 18cm (7")
 Drawer Height: 6cm (2.25")

LIST PRICE

£895.00

