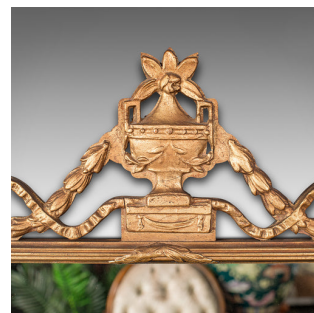
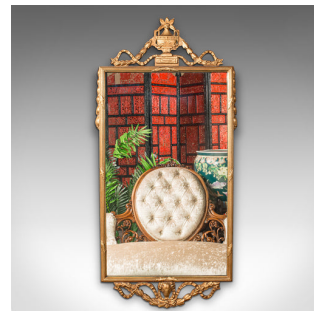


## Vintage Cafe Mirror, French, Giltwood, Hall, Overmantle, Mid 20th Century, 1950



### DESCRIPTION

Our Stock # 18.9786

This is a vintage cafe mirror. A French, giltwood and glass hall or overmantle mirror, dating to the mid 20th century, circa 1950.

- Dashing frame surrounds a pleasingly bright mirror plate
- Displaying a desirable aged patina and good order throughout
- Giltwood presents bright golden hues and appealing tonality
- Quality mirror plate displays minimal foxing and offers a wonderfully clear image
- Striking vase pediment with chased leaf and scroll detail
- Further foliate and scroll motif adorns the sides of the frame
- Fascinating ram's head masque situated within the lower pediment
- Panelled rear dressed with mounting wire for ease of hanging

This is an appealing vintage cafe mirror, with an eye-catching finish to the gilt frame. Benefits from a quality, radiant reflection. Delivered ready to hang.

Search [London Fine for #18.9786](#), or scan the QR code for more photos and details

### DIMENSIONS

Max Width: 52cm (20.5")  
 Max Depth: 3cm (1.25")  
 Max Height: 107cm (42.25")  
 Mirror Plate Width: 44.5cm (17.5")  
 Mirror Plate Height: 74.5cm (29.25")

### LIST PRICE

£895.00

