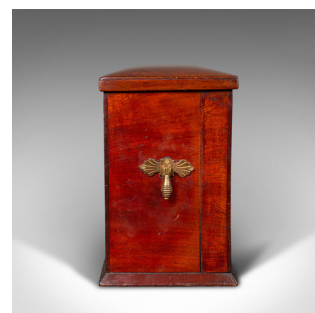


Antique Travelling Writing Slope, English, Correspondence Box, Victorian, C.1899



DESCRIPTION

Our Stock # 18.9763

This is an antique travelling writing slope. An English, mahogany and brass correspondence box, dating to the late Victorian period, circa 1899.

- Fascinating personalised example with fine presentation
- Displays a desirable aged patina and in good original order
- Select stocks present fine grain interest and rich russet hues
- Finished with quality, clean leather in a rich burgundy red
- Narrow profile to the body, opening out to a generous writing position
- Opening the lid reveals the cushioned pen slide to the reverse
- Two-section fall front skiver with a gold tooled and embossed surface
- Personal inscription dated to February 1899 a wonderful highlight
- Five document slides set within the frame above a pull out drawer
- Set within a pair of square recesses, a charming glass and brass ink well
- Quartet of period calendar cards and a celluloid stamp tray sit neatly within brass rails

rails

Search [London Fine for #18.9763](#) , or scan the QR code for more photos and details

DIMENSIONS

- Max Width: 34.5cm (13.5")
- Max Depth: 16.5cm (6.5")
- Max Height: 25.5cm (10")
- Extended Width: 34.5cm (13.5")
- Extended Depth: 61.5cm (24.25")
- Extended Height: 38.5cm (15.25")

