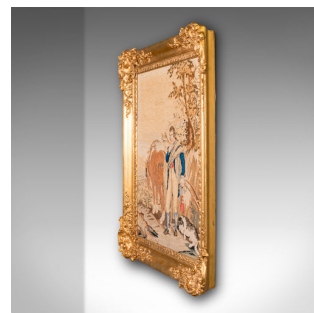


Antique Framed Tapestry, Continental, Needlepoint, Giltwood, Panel, Victorian



DESCRIPTION

Our Stock # 18.9826

This is an antique framed tapestry. A Continental, needlepoint and giltwood decorative panel, dating to the Early Victorian period, circa 1850.

- Grace your wall with this wonderful display tapestry
- Displaying a desirable aged patina and in good order
- Quality needlepoint in very good condition, with appealing colour
- Striking giltwood and gesso frame presents rich golden tones
- Presents an early 19th century nobleman at rest along a country road
- Joined by his trusty horse and loyal dog, with tree and grass detail
- Fascinating use of finer grade cotton for the gent's face
- Dressed to the rear with hanging wire for ease of mounting

This is a captivating antique framed tapestry, with a striking gilt frame and traditional Continental appeal. Delivered ready to mount.

Search [London Fine for #18.9826](#) , or scan the QR code for more photos and details

DIMENSIONS

Max Width: 67.5cm (26.5")
 Max Depth: 7cm (2.75")
 Max Height: 83.5cm (32.75")
 Panel Width: 47.5cm (18.75")
 Panel Height: 63.5cm (25")

LIST PRICE

£985.00

