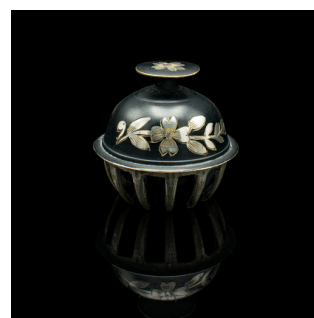


Antique Tea Calling Bell, Japanese, Brass, Silver Plate, Decorative, Circa 1920



DESCRIPTION

Our Stock # 18.9857

This is an antique tea calling bell. A Japanese, brass and silver plate decorative chime, dating to the early 20th century, circa 1920.

- Graced with charm and a delightfully metallic ring
- Displays a desirable aged patina throughout
- Enamelled brass presents appealing black tonality
- Lightly patinated to edges with hints of golden brass hues
- Silver plated foliate decor accentuates the body and provides fine contrast
- Distinctive toothed form to the bell opening
- Copper and iron clapper rings a dulcet tone within the bell housing
- Naively etched name to the rim, faintly appears to read 'LT Col Wight'

This is a darling antique tea calling bell, a charming addition to dinner time with a pleasant ring. Delivered ready to enjoy.

Search [London Fine for #18.9857](#), or scan the QR code for more photos and details

DIMENSIONS

Max Width: 5.5cm (2.25")

Max Depth: 5.5cm (2.25")

Max Height: 5cm (2")

LIST PRICE

£385.00

