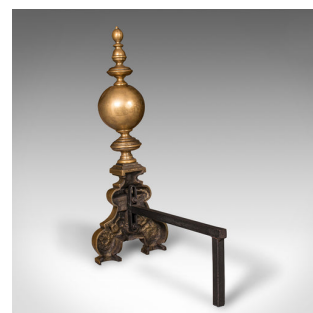
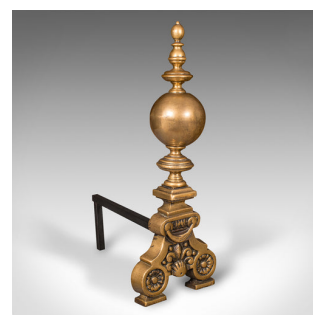


## Large Pair Of Antique Fire Dogs, English, Brass, Cast Iron, Andirons, Victorian

**DESCRIPTION**

Our Stock # 18.9010

This is a large pair of antique fire dogs. An English, brass and cast iron decorative andiron, dating to the late Victorian period, circa 1900.

- Substantial and attractive fireside rests - ideal for the larger fireplace
- Displaying a desirable aged patina and in good order
- Solid brass finial and legs present rich golden tones
- Cast iron rear support resplendent with a deep graphite hue
- Legs decorated with a scrolled motif and a pair of foliate patera

This is an appealing pair of antique fire dogs, with a generous size and of substantial weight. Delivered polished and ready for the home.

Search [London Fine for #18.9010](#) , or scan the QR code for more photos and details

**DIMENSIONS**

Max Width: 18.5cm (7.25")

Max Depth: 39cm (15.25")

Max Height: 50.5cm (20")

**LIST PRICE**

£495.00

