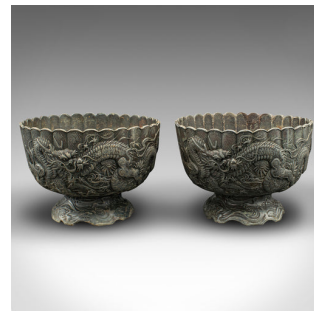


Pair Of Antique Decorative Planters, Chinese, Jardiniere Pot, Dragons, Victorian



DESCRIPTION

Our Stock # 18.9927

This is a pair of antique decorative planters. A Chinese, cast lead jardiniere pot, dating to the Victorian period, circa 1880.

- Strikingly presented relief decor accentuates these appealing planters
- Displaying a desirable aged patina and in good original order
- Cast leaden metal presents medium grey hues
- Superb dragon figures drape around the body
- Further decorated with a sash shaped rim and cross hatch ground
- Each offer a pleasing weight in the hand of 1.55kg (3.41 lb)

This is a fascinating pair of antique decorative planters, graced with striking dragon decor. Delivered ready to display.

Search [London Fine for #18.9927](#) , or scan the QR code for more photos and details

DIMENSIONS

Max Width: 15.5cm (6")

Max Depth: 15.5cm (6")

Max Height: 10.5cm (4.25")

