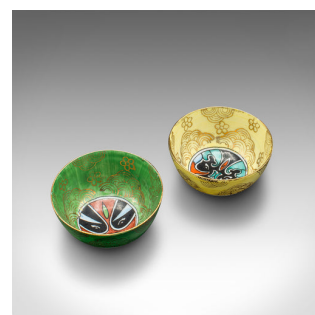


Pair Of Vintage Ceremonial Teacups, Chinese, Ceramic, Decorative Cup, Circa 1960



DESCRIPTION

Our Stock # 18.9945

This is a pair of vintage ceremonial teacups. A Chinese, ceramic and gilt finished decorative cup in case, dating to the mid 20th century, circa 1960.

- Graced with appealing colour and presented neatly within a case
- Displaying a desirable aged patina and in good order
- White ceramic accentuated with a colourful palette
- Gilt finish adds an appealing shimmer to each cup
- Original carry case with a striking red lining

This is a charming pair of vintage ceremonial teacups, with appealing colour and a tactile feel in the hand. Delivered ready to enjoy.

Search [London Fine for #18.9945](#), or scan the QR code for more photos and details

DIMENSIONS

Box Width: 11.5cm (4.5")

Box Depth: 6cm (2.25")

Box Height: 3.5cm (1.5")

Cup Diameter: 5cm (2")

Cup Height: 2.5cm (1")

LIST PRICE

£195.00

