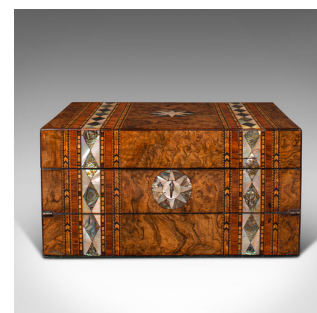


Antique Ladies Utility Box, English, Burr Walnut, Writing Slope, Sewing, Regency



DESCRIPTION

Our Stock # 18.9861

This is an antique lady of the house utility box. An English, burr walnut and mother of pearl inlaid writing slope and sewing box, dating to the late Regency period, circa 1830.

- Exceptional display quality, with a useful suite of compartments
- Displaying a desirable aged patina and in good original order
- Select burr walnut presents exquisite grain interest and deep caramel hues
- Strikingly inlaid with Mother of Pearl star forms and diamond borders
- Double action form, with a removable tray set upon the lower section of the work surface
- Inlaid lock escutcheon to fascia with inset working lock – key present
- The interior bedazzles in cobalt blue velvet, with a ruched finish to the inside of the lid
- Behind the champagne coloured silk cotton, a pair of concertina document slides
- The lift-out tray features three compartments, two pin cushions and a pair of needle sleeves
- Accentuated with golden embroidery, the two section writing surface in good order
- Upper half of the slope opens to gain access to the recessed storage compartment

DIMENSIONS

Box Width: 30cm (11.75")
 Box Depth: 22cm (8.75")
 Box Height: 15cm (6")
 Extended Width: 30cm (11.75")
 Extended Depth: 44cm (17.25")
 Extended Height: 33cm (13")



Search [London Fine for #18.9861](#), or scan the QR code for more photos and details

+44 (0) 207 1833 511

London Fine Ltd
 The Antique Village
 The Old Whiteways Cider Factory
 Hele, Devon, EX5 4PW

sales@londonfine.co.uk
 E. & O. E.