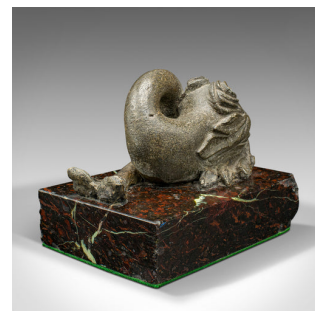
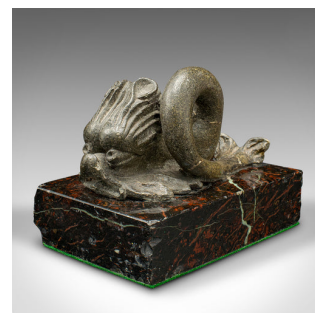
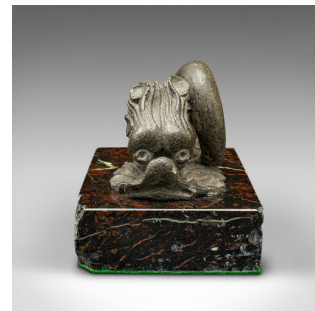


## Antique Serpentine Paperweight, Chinese, Soapstone, Marble, Desktop, Victorian



### DESCRIPTION

Our Stock # 18.9954

This is an antique serpentine paperweight. A Chinese, stone and marble dragon fish figure, dating to the early Victorian period, circa 1850.

- Distinctive and tactile Oriental taste, with appealing originality
- Displays a desirable aged patina throughout
- Carved soapstone figure shows a lightly polished finish
- Presented upon a black and red marble plinth
- Dressed to the base with a protective green baize

This is a fascinating antique serpentine paperweight, a treat for the desktop. Delivered ready to display.

Search [London Fine for #18.9954](#), or scan the QR code for more photos and details

### DIMENSIONS

Max Width: 9.5cm (3.75")

Max Depth: 14cm (5.5")

Max Height: 10.5cm (4.25")

### LIST PRICE

£695.00

